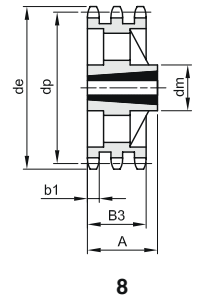
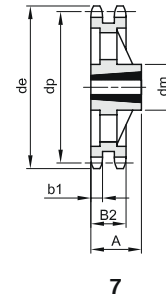
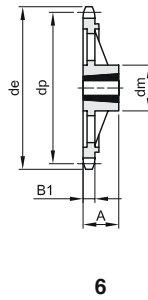
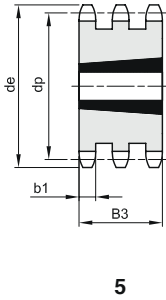
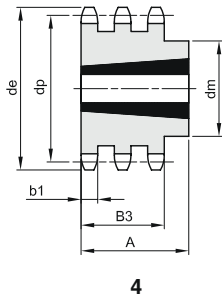
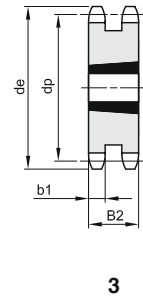
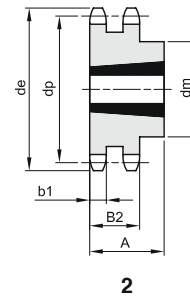
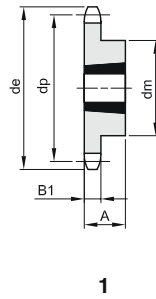
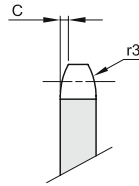


1"1/2 x 1"
38,1 x 25,4 mm
Roller 25,4 mm
24B - 1 - 2 - 3

B1	B2	B3	b1	C	r3
24,1	72	120,3	23,6	4	38



Material: C45 steel / * Material: EN-GJL-200 cast iron

Z	de	dp	simple				double				triple						
			dm	A	CompassType	Kg.	dm	A	CompassType	Kg.	dm	A	CompassType	Kg.			
11	149,0	135,21	90	32	2012	1	1,70										
12	161,0	147,22	90	32	2012	1	2,16										
13	173,0	159,18	110	44	2517	1	2,77		72	2517	3	5,30					
14	185,0	171,22	120	44	2517	1	3,60										
15	197,0	183,26	120	44	2517	1	4,20		72	3020	3	6,60	120,3	3030	5	20,00	
17	221,0	207,34	140	51	3020	1	5,40		72	3020	3	10,30	120,3	3030	5	25,00	
18	233,0	219,42	140	51	3020	1	6,10										
19	245,5	231,49	140	51	3020	1	6,85		160	76	3030	2	14,80	120,3	3535	5	30,00
20	257,5	243,57	140	51	3020	1	7,76										
21	270,5	255,65	140	51	3020	1	8,52		160	76	3030	2	19,50	120,3	4040	5	35,00
23	294,5	279,80	160	51	3020	1	11,31		175	89	3535	2	24,00	120,3	4040	5	44,00
25	319,0	304,00	160	51	3020	1	13,33		175	89	3535	2	29,00	120,3	4040	5	50,00
30	379,5	364,50	160	51	3020	1	19,00		175	89	3535	2	40,00	120,3	4040	5	60,00
38*	476,5	461,39	160	76	3030	6	24,00		175	89	3535	7	44,00	120,3	4040	8	66,00
57*	707,5	691,63	160	76	3030	6	45,00		175	89	3535	7	72,00	120,3	4545	8	120,00
76*	939,0	921,98	175	89	3535	6	70,00		216	102	4040	7	107,00	120,3	4545	8	131,00