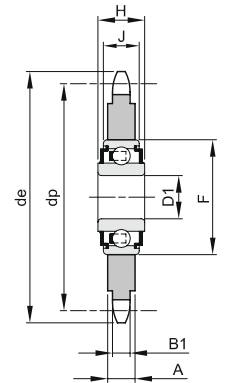
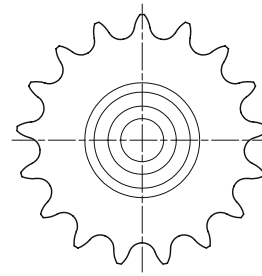


Our chain-stretcher sprockets with ball bearing are supplied “ready for mounting”. They consist of a toothed wheel mounted on a ball bearing with double protection shield that guarantee a high resistance against break-age and wear. Bearing requires no

The wheels are in C45 steel and they are toothed according to DIN 8187, ISO 606. The ball bearing can operate at a temperature from -20°C to $+120^{\circ}\text{C}$. maintenance.

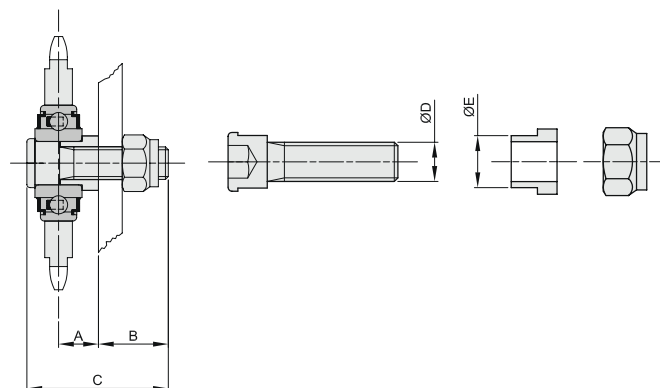


Material: C45 steel

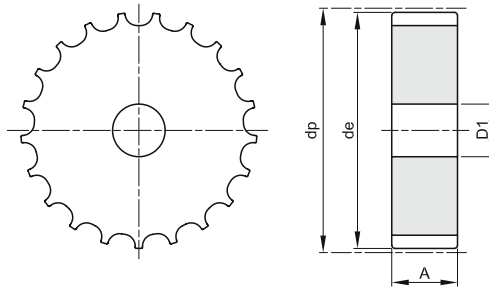
Z	step	ISO	De	Dp	B1	A	D1	F	H	J	Kg.
23	8 x 1/8"	05B-1	62,2	58,75	2,8	7,0	16 ^{+0,26} / _{+0,13}	40	18,3	12	0,13
21	3/8" x 7/32"	06B-1	67,6	63,91	5,3	5,3	16 ^{+0,26} / _{+0,13}	40	18,3	12	0,15
22	3/8" x 7/32"	06B-1	70,6	66,93	5,3	5,3	16 ^{+0,26} / _{+0,13}	40	18,3	12	0,16
18	1/2" x 1/8"	081-1	79,4	73,14	3,0	7,0	16 ^{+0,26} / _{+0,13}	40	18,3	12	0,18
15	1/2" x 3/16"	083-1	67,4	61,09	4,5	7,0	16 ^{+0,26} / _{+0,13}	40	18,3	12	0,16
16	1/2" x 3/16"	083-1	71,4	65,10	4,5	7,0	16 ^{+0,26} / _{+0,13}	40	18,3	12	0,17
18	1/2" x 3/16"	083-1	79,4	73,14	4,5	7,0	16 ^{+0,26} / _{+0,13}	40	18,3	12	0,20
14	1/2" x 5/16"	08B-1	61,9	57,07	7,2	7,2	16 ^{+0,26} / _{+0,13}	40	18,3	12	0,13
16	1/2" x 5/16"	08B-1	69,9	65,10	7,2	7,2	16 ^{+0,26} / _{+0,13}	40	18,3	12	0,17
18	1/2" x 5/16"	08B-1	78,0	73,14	7,2	7,2	16 ^{+0,26} / _{+0,13}	40	18,3	12	0,22
14	5/8" x 3/8"	10B-1	78,2	71,34	9,1	9,1	16 ^{+0,26} / _{+0,13}	40	18,3	12	0,23
15	5/8" x 3/8"	10B-1	83,2	76,36	9,1	9,1	16 ^{+0,26} / _{+0,13}	40	18,3	12	0,27
17	5/8" x 3/8"	10B-1	93,3	86,39	9,1	9,1	16 ^{+0,26} / _{+0,13}	40	18,3	12	0,36
13	3/4" x 7/16"	12B-1	87,8	79,59	11,1	11,1	16 ^{+0,26} / _{+0,13}	40	18,3	12	0,34
15	3/4" x 7/16"	12B-1	99,8	91,63	11,1	11,1	16 ^{+0,26} / _{+0,13}	40	18,3	12	0,47
12	1" x 17,02	16B-1	109,7	98,14	16,2	16,2	20 ^{+0,10} / ₋₀	47	17,7	14	0,72
13	1" 1/4 x 3/4"	20B-1	147,7	132,67	18,5	18,5	25 ^{+0,10} / ₋₀	52	21,0	15	1,64

The Locking Parts have been presented to make easier and faster the mounting of Chain Stretcher Sprockets.

Elements set: Exagonal head screw, hole guide bush, self-locking exagonal nut.

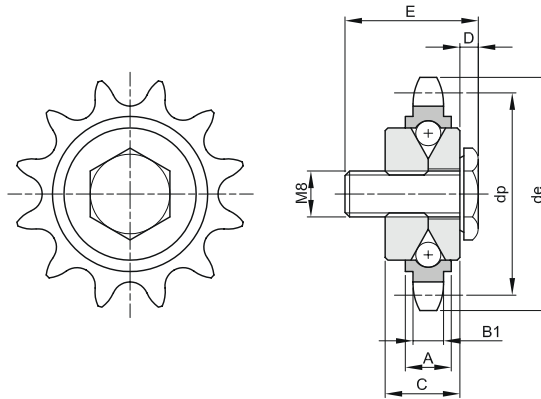


Description	A	B	C	ØD	ØE	Kg
EFT-1	15	25	52	M12	16	0,08
EFT-2	25	28	66	M16	20	0,16



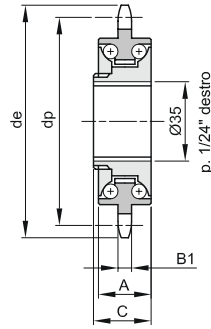
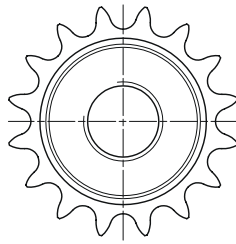
Material: C45 steel

Z	step	de	dp	D1	A	Kg.
15	1"1/2 (38,1)	92,9	93,7	16	43,5	1,86
17	1"1/2 (38,1)	104,7	105,5	16	43,5	2,34
19	1"1/2 (38,1)	116,6	117,3	16	43,5	3,10
21	1"1/2 (38,1)	129,7	129,2	20	43,5	3,79
23	1"1/2 (38,1)	141,6	141,2	20	43,5	4,46
25	1"1/2 (38,1)	153,6	153,2	20	43,5	5,50
27	1"1/2 (38,1)	165,6	165,2	20	43,5	6,31
29	1"1/2 (38,1)	177,7	177,2	20	43,5	7,31
31	1"1/2 (38,1)	189,7	189,3	20	43,5	8,63

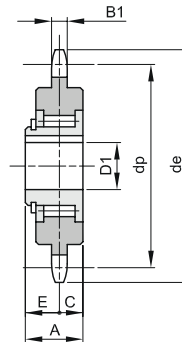
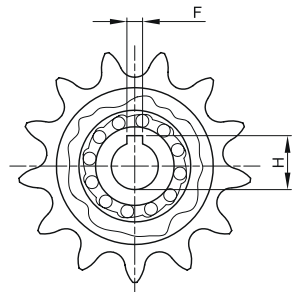


Material: C45 steel

Z	step	de	dp	A	B1	C	D	E	F	Kg.
12	3/8" x 5/32"	40	36,80	7	3,5	11,7	3	23	7,2	0,06
10	1/2" x 1/8"	46	41,10	7	3,0	11,7	3	23	7,2	0,06
10	1/2" x 3/16"	46	41,10	7	4,5	11,7	3	23	7,2	0,07



Z	step	de	dp	B1	A	C	Kg.
16	1/2" x 1/8"	71,4	65,10	3	14	15	0,14
18	1/2" x 1/8"	79,4	73,14	3	14	15	0,15



Material: Case-hardened and tempered 18NiCrMo5 steel

Z	step	de	dp	A	C	E	B1	D1	F	H	Kg.
13	1/2" x 1/8"	59,4	53,06	14,8	6	8,8	3	12	4	13,7	0,12