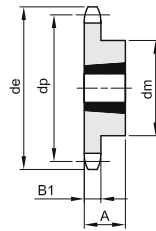
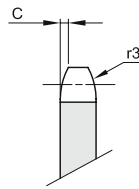
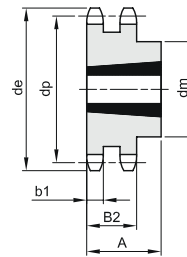


**1"1/4 x 3/4"**  
**31,75 x 19,56 mm**  
**Roller 19,05 mm**  
**20B - 1 - 2 - 3**

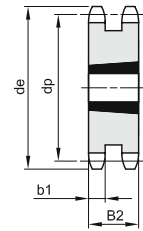
<b>B1</b>	<b>B2</b>	<b>B3</b>	<b>b1</b>	<b>C</b>	<b>r3</b>
18,5	54,6	91	18,2	3,5	32



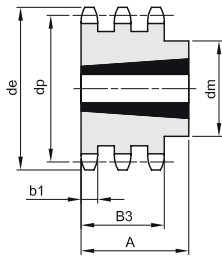
1



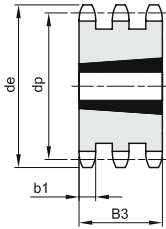
2



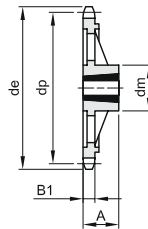
3



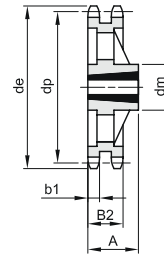
4



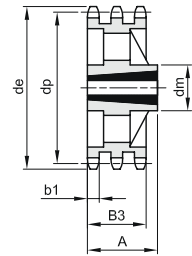
5



6



7



8

Material: C45 steel / \* Material: EN-GJL-200 cast iron

Z	de	dp	simple				double				triple						
			dm	A	CompassType	Kg.	dm	A	CompassType	Kg.	dm	A	CompassType	Kg.			
12	137,0	122,68	90	32	1615	1	1,90										
13	147,5	132,65	90	32	2012	1	1,50	54,6	2517	3	2,20						
14	157,6	142,68	110	44	2517	1	2,40										
15	167,7	152,72	110	44	2517	1	3,39	54,6	2517	3	4,00	91	3020	5	4,43		
16	177,7	162,75	110	44	2517	1	4,23										
17	187,7	172,78	110	44	2517	1	5,07	54,6	2517	3	5,00	91	3030	5	7,39		
18	197,8	182,85	110	44	2517	1	5,91										
19	207,9	192,91	110	44	2517	1	6,75	140	76	3030	2	6,30	91	3030	5	11,65	
20	217,9	202,98	110	44	2517	1	7,23										
21	228,0	213,04	120	44	2517	1	7,70	140	76	3030	2	8,80	91	3535	5	12,80	
23	248,2	233,17	120	44	2517	1	8,78	140	76	3030	2	9,80	91	3535	5	17,38	
25	268,4	253,33	120	44	2517	1	9,50	140	76	3030	2	10,50	91	3535	5	22,40	
30	318,7	303,75	160	51	3020	1	11,60	160	76	3030	2	14,00	91	3535	5	36,50	
38*	399,4	384,49	160	51	3020	6	15,80	160	76	3030	7	22,00	178	91	3535	8	28,00
57*	592,3	576,36	160	51	3020	6	17,90	175	89	3535	7	37,00	216	102	4040	8	42,00
76*	784,3	768,32	160	51	3020	6	25,00	175	89	3535	7	62,00	260	114	4545	8	85,00