

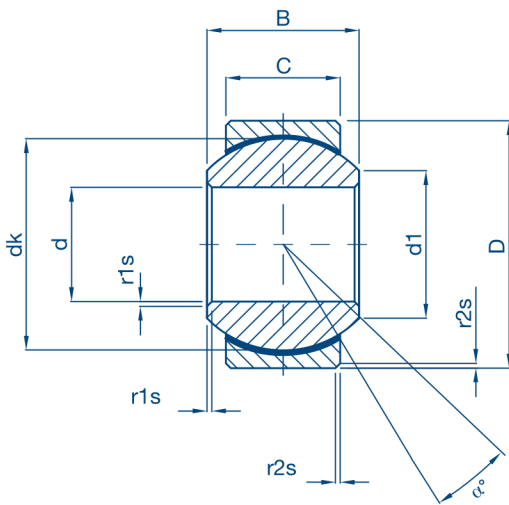
DIN ISO 12240-1 Series K

Coupling: steel/PTFE

Application: precision engineering

Series
SPK

**SELF-LUBRICATING SPHERICAL BEARINGS
 STANDARD Version**



Dimensions mm

DESIGNATION	d	B	C	D	d1	dk	r1s	r2s	static radial load Co. (daN)	static axial load Co. (daN)	α° pivoting angle \approx	weight \approx (kg)
	H7			h6			min.	min.				
SPK5	5	8	6	13	7,7	11,1	0,3	0,3	1300	170	13	0,006
SPK6	6	9	6,75	16	8,9	12,7			1700	220	13	0,009
SPK8	8	12	9	19	10,4	15,6			2800	370	14	0,016
SPK10	10	14	10,5	22	12,9	19,1			4000	520	13	0,025
SPK12	12	16	12	26	15,4	22,2			5300	700	13	0,040
SPK14	14	19	13,5	28	16,8	25,4			8600	880	15	0,090
SPK16	16	21	15	32	19,3	28,6			8500	1100	15	0,100
SPK18	18	23	16,5	35	21,8	31,7			13100	1400	15	0,125
SPK20	20	25	18	40	24,3	34,9			12500	1600	14	0,150
SPK22	22	28	20	42	25,8	38,1			19100	2100	15	0,210
SPK25	25	31	22	47	29,5	42,8			23600	2700	15	0,300
SPK30	30	37	25	55	34,8	50,8			25400	3300	17	0,380
SPK35	35	43	28*	62*	37,7*	57,2*	0,6	1	32000	4150	19	0,490
SPK40	40	49	35	75	44,2	66,6	0,6	1	48000	4800	16	0,900
SPK50	50	60	45	90	55,8	82,5	0,6	1	80000	7900	14	1,600

*no standard dimension

Technical reading from page 9 to page 15

MATERIAL

Inner ring:

tempered, ground and polished steel for bearings 100Cr6 (1.3505)

Outer ring:

C45 (1.1191) carbon steel and PTFE bonded on the inner surface